

# MONTHLY STATISTICAL REPORT

RESIDENTIAL RESALE ACTIVITY ON OAHU

**AUGUST 2009**

*Print Date: September 1, 2009*



©2009 COPYRIGHT HONOLULU BOARD OF REALTORS®. ALL RIGHTS RESERVED. INFORMATION HEREIN DEEMED RELIABLE BUT NOT GUARANTEED.

NOTE: ANY PRINT OR NON-PRINT FORMS OF ADVERTISING OR OTHER FORMS OF PUBLIC REPRESENTATIONS BASED IN WHOLE OR IN PART ON INFORMATION SUPPLIED BY THE HONOLULU BOARD OF REALTORS® OR ITS MLS, INCLUDING ANY MLS DATA USED IN ACCORDANCE WITH THE PROVISIONS OF SECTION 12.3(B), (C) AND (D) AND SECTION 12.4, SHALL CLEARLY SPECIFY THE PERIOD OF TIME COVERED BY THE DATA AND SHALL PROMINENTLY DISPLAY THE FOLLOWING DISCLAIMER AND ATTRIBUTION STATEMENT: "BASED ON INFORMATION FROM THE MULTIPLE LISTING SERVICE OF THE HONOLULU BOARD OF REALTORS® FOR THE PERIOD OF AUGUST 1, 2009 THROUGH AUGUST 31, 2009."

HONOLULU BOARD OF REALTORS® • 1136 12<sup>TH</sup> AVE STE 200 • HONOLULU, HI 96816 • T: 732-3000 • F: 732-8732 • WWW.HICENTRAL.COM

Honolulu Board of Realtors® Research Department  
***MONTHLY STATISTICAL REPORT***

TABLE OF CONTENTS

**SALES**

Year-to-Date (YTD) Residential Resale Statistics For Oahu by Region	1
Number of Residential Resales by Month	2
Residential Property Annual Sales Rate	3
Median Residential Sales Price by Month	4
Median Number of Days on the Market for Residential Properties	5
Monthly and YTD Sales Activity by Neighborhood	6
Condominium Resale Volume and Median Sales Prices by Land Tenure	7
YTD Condominium Resale Statistics and Days on Market by Land Tenure	8

**NEW LISTINGS**

Number of New Residential Listings by Month	9
Median List Price of New Residential Listings by Month	10
New Listing Activity on Oahu by Neighborhood	11

**ACTIVE LISTINGS**

Inventory of Active Residential Listings by Month	12
Median Price of Active Residential Listings by Month	13
Availability of Housing on Oahu by Neighborhood	14
Available Condominiums on Oahu by Land Tenure	15
Months of Residential Inventory Remaining by Month	16
Months of Inventory Remaining by Price Range and Area	17

**NON-MLS INFORMATION**

Weekly Average Yields of Treasury Securities	18
--	----

# Honolulu Board of Realtors®

## Multiple Listing Service

### Statistical Summary of RESALES

#### YEAR-TO-DATE Through August 31, 2009

	NUMBER OF SALES				MEDIAN SALES PRICES			AVERAGE SALES PRICES			
	2009	2008	CHANGES		2009	2008	Percent Change	2009	2008	Percent Change	
			Num	Percent							
<b>SINGLE-FAMILY HOMES</b>											
<b>OVERALL OAHU</b>	1,619	1,919	-300	-15.6%	\$570,000	\$629,000	-9.4%	\$678,836	\$810,392	-16.2%	
Metro Oahu	169	223	-54	-24.2%	\$655,000	\$735,000	-10.9%	\$681,327	\$769,977	-11.5%	
East Oahu	290	345	-55	-15.9%	\$840,000	\$888,000	-5.4%	\$1,097,967	\$1,388,529	-20.9%	
Windward Oahu	271	318	-47	-14.8%	\$670,000	\$734,000	-8.7%	\$787,938	\$982,798	-19.8%	
North Shore	41	50	-9	-18.0%	\$645,000	\$765,000	-15.7%	\$850,360	\$1,037,760	-18.1%	
Leeward Oahu	848	983	-135	-13.7%	\$480,000	\$525,000	-8.6%	\$491,846	\$549,316	-10.5%	
<b>CONDOMINIUMS</b>											
<b>OVERALL OAHU</b>	2,058	2,868	-810	-28.2%	\$305,000	\$330,000	-7.6%	\$347,429	\$390,965	-11.1%	
Metro Oahu	1,087	1,583	-496	-31.3%	\$300,000	\$325,000	-7.7%	\$358,964	\$399,026	-10.0%	
East Oahu	176	219	-43	-19.6%	\$450,000	\$521,000	-13.6%	\$524,517	\$633,319	-17.2%	
Windward Oahu	126	162	-36	-22.2%	\$380,000	\$399,000	-4.8%	\$382,144	\$421,124	-9.3%	
North Shore	14	26	-12	-46.2%	\$263,500	\$407,000	-35.3%	\$294,100	\$498,638	-41.0%	
Leeward Oahu	655	878	-223	-25.4%	\$270,000	\$298,300	-9.5%	\$275,164	\$307,226	-10.4%	
<b>ALL SALES:</b>	3,677	4,787	-1110	-23.2%	<b>TOTAL DOLLAR VOLUME OF SALES</b>						
					<b>SINGLE-FAMILY HOMES</b>			<b>CONDOMINIUMS</b>			
					Percent Change			Percent Change			
					<b>2009</b>	<b>2008</b>			<b>2009</b>	<b>2008</b>	<b>Change</b>
<b>TMK Area Designations</b>	<b>OVERALL OAHU:</b>				\$1,099,035,484	\$1,555,142,248	-29.3%	\$715,008,882	\$1,121,287,620	-36.2%	
Zone 1 and 2	<b>Metro Oahu</b>				\$115,144,263	\$171,704,871	-32.9%	\$390,193,868	\$631,658,158	-38.2%	
Zone 3	<b>East Oahu</b>				\$318,410,430	\$479,042,505	-33.5%	\$92,314,992	\$138,696,861	-33.4%	
Zone 4 and 5-1 through 5-4	<b>Windward Oahu</b>				\$213,531,198	\$312,529,764	-31.7%	\$48,150,144	\$68,222,088	-29.4%	
Zone 5-5 through 5-9 and 6	<b>North Shore</b>				\$34,864,760	\$51,888,000	-32.8%	\$4,117,400	\$12,964,588	-68.2%	
Zone 7 through 9	<b>Leeward Oahu</b>				\$417,085,408	\$539,977,628	-22.8%	\$180,232,420	\$269,744,428	-33.2%	
<b>TOTAL DOLLAR VOLUME:</b>								\$1,814,044,366	\$2,676,429,868	-32.2%	

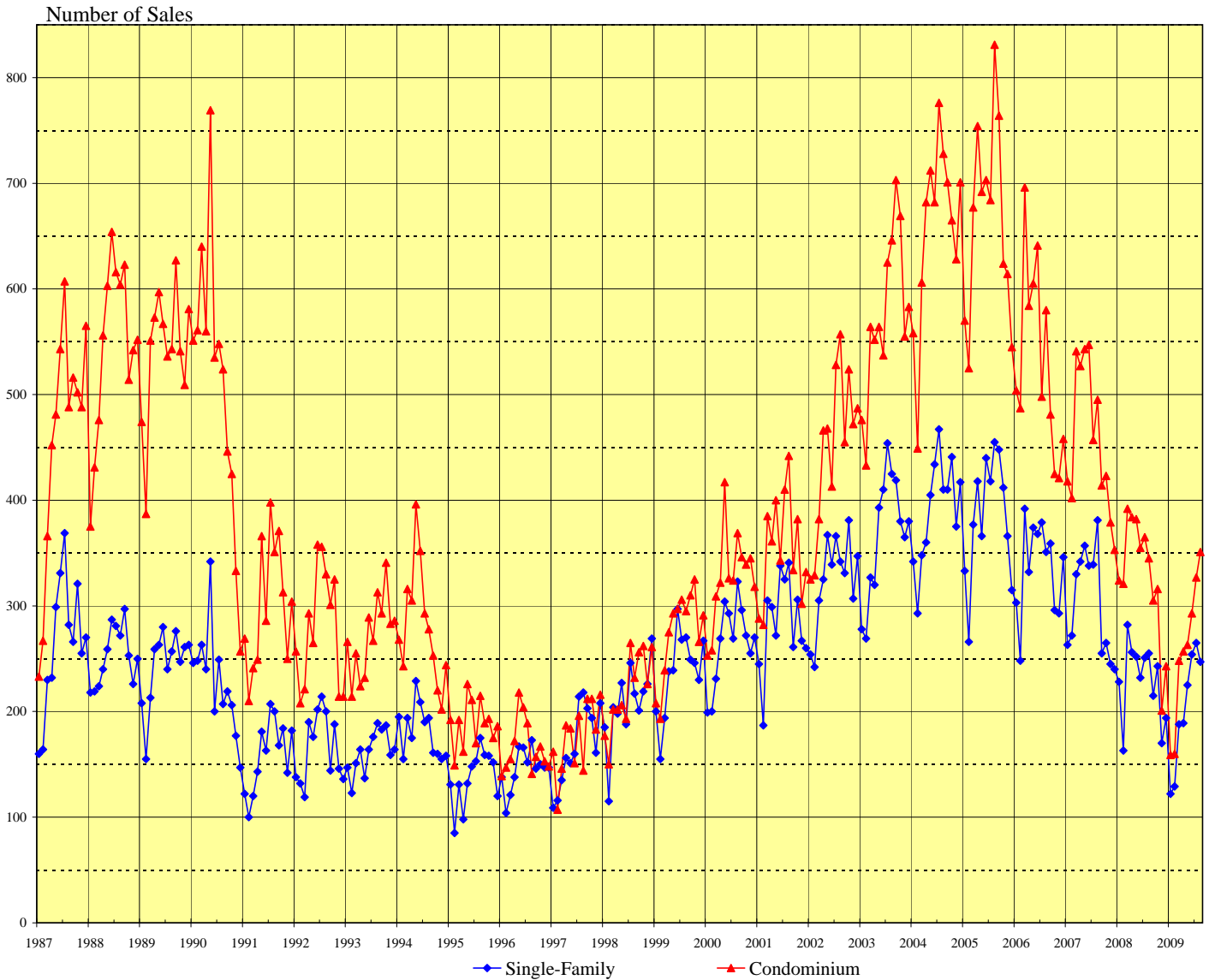
**IMPORTANT: All sales information is shown for the month in which properties were reported sold, after closing and recordation. The time delay between the signing of a sales contract and clearing of escrow is nominally between one and three months.**

Permission to copy graphs and use data from this copyrighted report is freely granted but full attribution of source is required on all copies and reprints.

**SOURCE: Honolulu Board of Realtors® Research Department, compiled from MLS data.**

# NUMBER OF RESIDENTIAL PROPERTY SALES

## OAHU, HAWAII: 1987 - 2009, Monthly

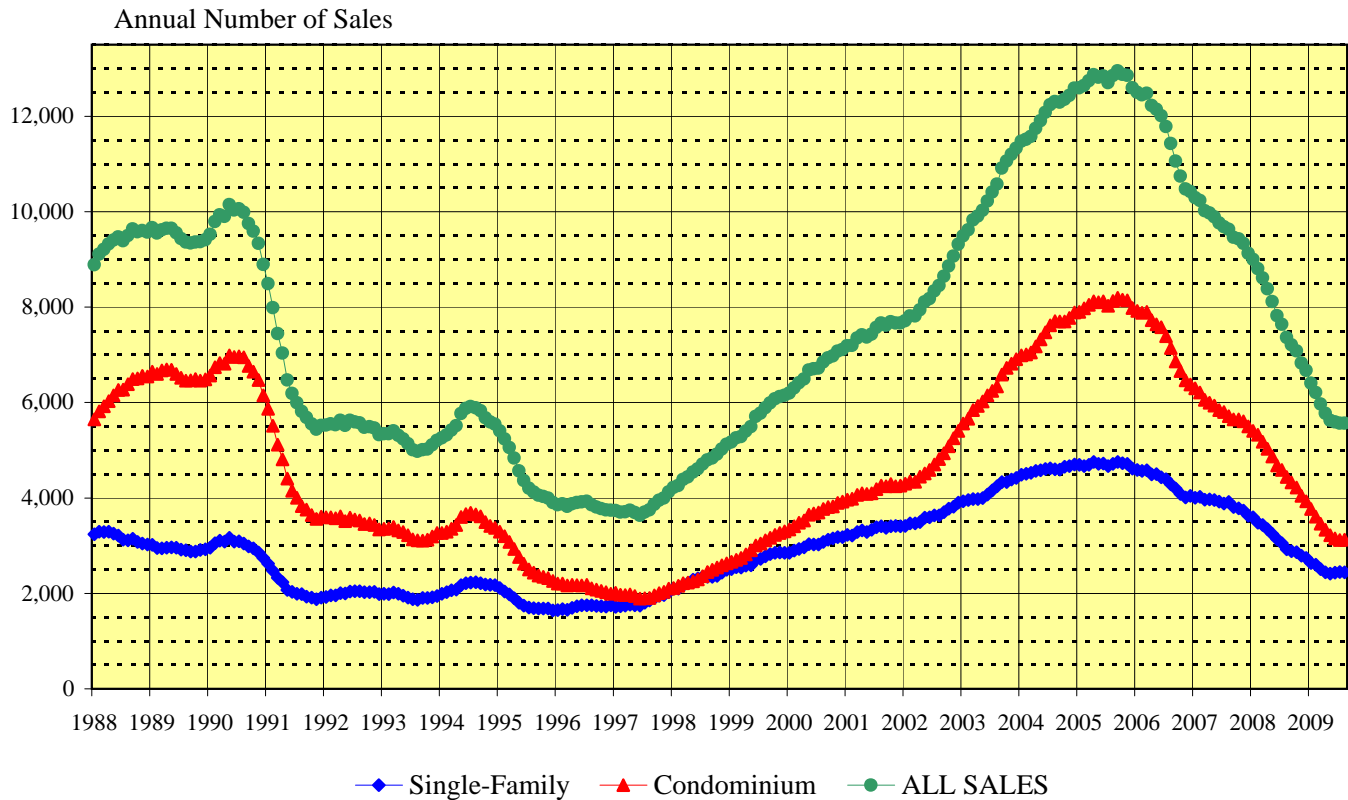


Month	2004		2005		2006		2007		2008		2009	
	Single-Family	Condo	Single-Family	Condo	Single-Family	Condo	Single-Family	Condo	Single-Family	Condo	Single-Family	Condo
Jan	342	558	333	570	303	504	263	418	228	324	122	159
Feb	293	449	266	525	248	487	272	402	163	321	129	160
Mar	348	606	377	677	392	696	330	541	282	392	188	248
Apr	361	682	418	754	332	584	342	527	256	384	189	257
May	405	712	366	692	374	605	357	543	252	382	225	263
Jun	434	682	440	703	368	641	338	547	232	355	254	293
Jul	467	776	418	684	379	498	339	457	251	365	265	327
Aug	410	728	455	831	351	580	381	495	255	345	247	351
Sep	410	701	448	764	359	481	255	414	215	305		
Oct	441	665	412	624	296	425	265	423	243	316		
Nov	375	628	366	614	293	421	245	379	170	201		
Dec	417	701	315	545	346	458	240	353	194	243		

SOURCE: Honolulu Board of Realtors® Research Department, compiled from MLS data.

# OAHU RESIDENTIAL PROPERTY SALES RATE

## Annual Unit Sales Rates Based on Prior 12 Months



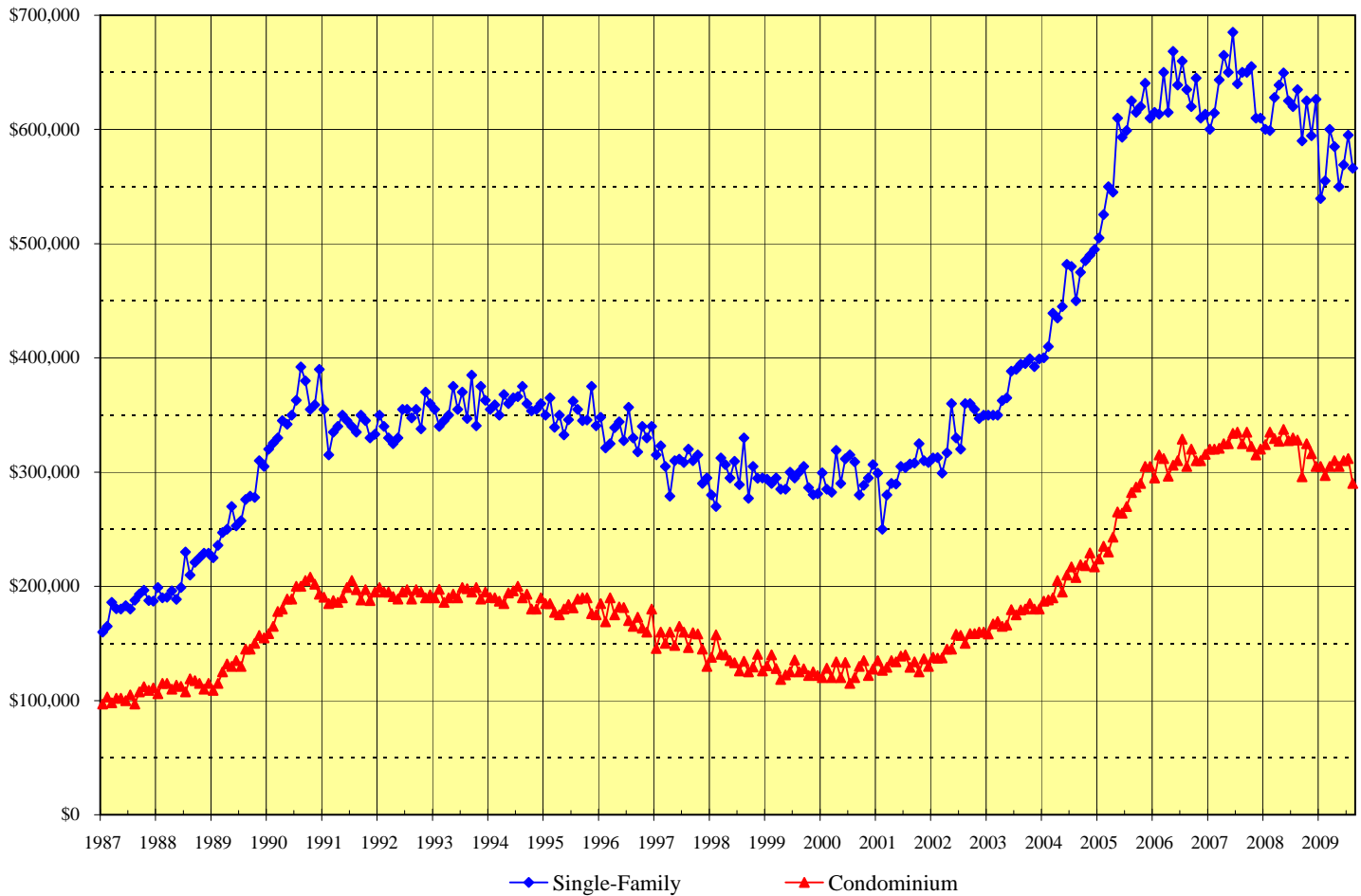
This chart is designed to more clearly show the general direction of the residential resales market on Oahu. It eliminates seasonal patterns that make monthly data difficult to read and interpret. Each point on this chart represents the total sales for the twelve months that end with the marked month. For example, the data points shown for December 2007 denote the total sales activity for the period January through December 2007. Similarly, the data points presented for June 2008 are the total sales for the 12-month period July 2007 through June 2008.

The points on this chart will change direction (i.e., go up or down) each month based on whether the newest month's sales activity is higher or lower than during the same month in the prior year. For example, if the sales reported for June 2008 are higher than those achieved in June 2007, the data points added to the chart for June 2008 will be higher than the May 2008 points.

**SOURCE: Honolulu Board of Realtors® Research Department, compiled from MLS data.**

# MEDIAN SALES PRICES OF RESIDENTIAL PROPERTIES

OAHU, HAWAII: 1987 - 2009, Monthly



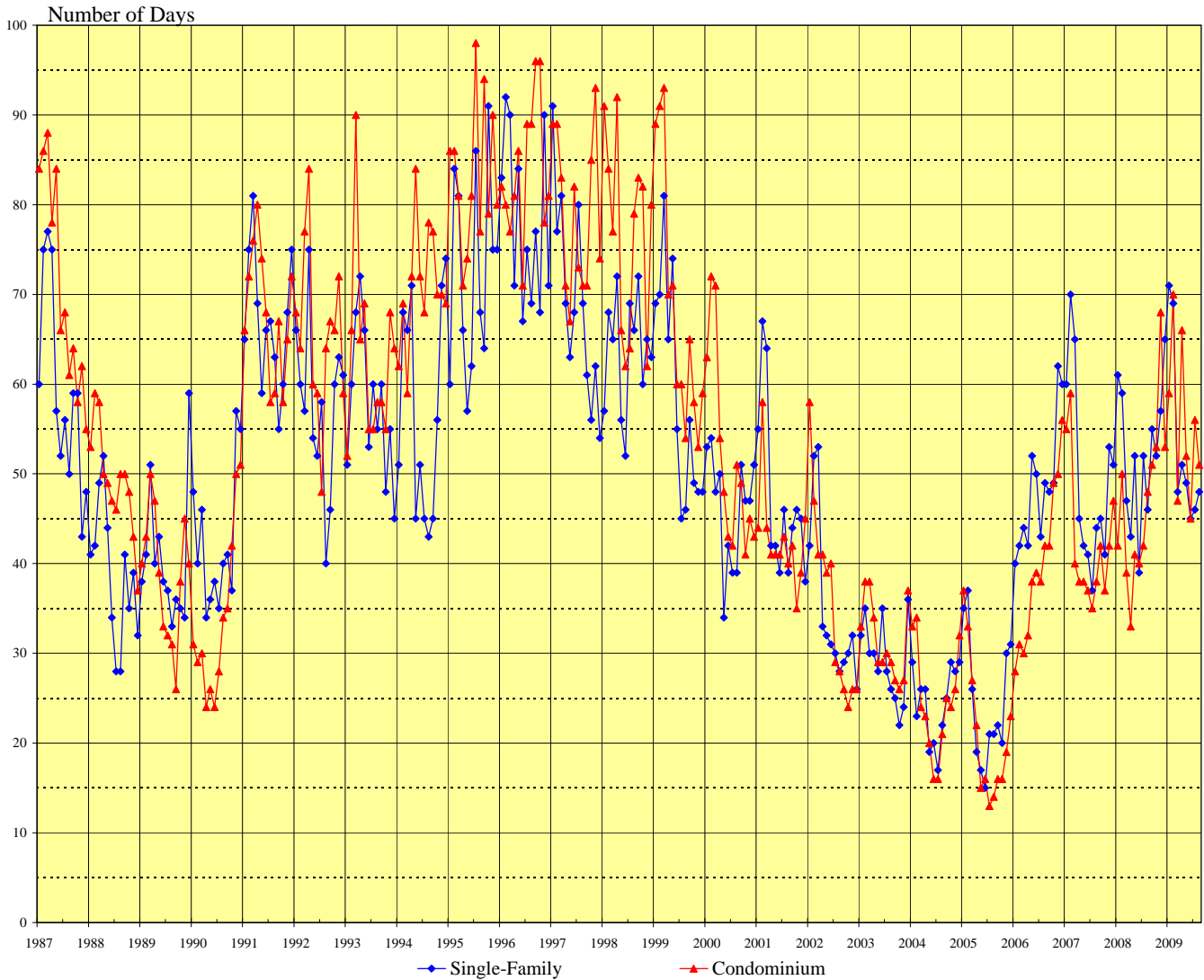
Month	2005		2006		2007		2008		2009	
	Single-Family	Condo	Single-Family	Condo	Single-Family	Condo	Single-Family	Condo	Single-Family	Condo
Jan	\$505,000	\$224,000	\$615,000	\$295,000	\$600,000	\$320,000	\$600,000	\$324,000	\$539,500	\$305,000
Feb	\$525,500	\$235,000	\$613,500	\$315,000	\$614,500	\$320,000	\$599,000	\$335,000	\$555,000	\$297,000
Mar	\$550,000	\$230,000	\$650,000	\$312,000	\$643,500	\$321,000	\$628,000	\$329,300	\$600,000	\$305,000
Apr	\$545,000	\$243,000	\$615,000	\$296,500	\$665,000	\$325,000	\$639,000	\$327,000	\$585,000	\$310,000
May	\$610,000	\$265,000	\$668,300	\$306,000	\$650,000	\$325,000	\$649,500	\$337,300	\$550,000	\$305,000
Jun	\$593,300	\$264,000	\$639,000	\$310,000	\$685,000	\$334,000	\$625,000	\$327,500	\$569,000	\$310,000
Jul	\$599,000	\$270,000	\$660,000	\$329,000	\$640,000	\$335,000	\$620,000	\$329,900	\$595,000	\$312,000
Aug	\$625,000	\$282,000	\$635,000	\$305,000	\$650,000	\$325,000	\$635,000	\$328,000	\$566,000	\$290,000
Sep	\$615,000	\$287,000	\$620,000	\$320,000	\$650,000	\$335,000	\$590,000	\$296,000		
Oct	\$620,000	\$290,000	\$645,000	\$310,000	\$655,000	\$322,500	\$625,000	\$325,000		
Nov	\$640,500	\$305,000	\$610,000	\$310,000	\$610,000	\$315,000	\$594,500	\$316,200		
Dec	\$610,000	\$305,000	\$613,500	\$315,500	\$610,000	\$320,000	\$626,500	\$305,000		

SOURCE: Honolulu Board of Realtors® Research Department, compiled from MLS data.

# MEDIAN NUMBER OF DAYS ON THE MARKET

## Days between Listing Date and Contract Date

### OAHU, HAWAII: 1987 - 2009, Monthly



Month	2004		2005		2006		2007		2008		2009	
	Single-Family	Condo	Single-Family	Condo	Single-Family	Condo	Single-Family	Condo	Single-Family	Condo	Single-Family	Condo
Jan	29	33	35	37	40	28	60	55	61	42	71	59
Feb	23	34	37	33	42	31	70	59	59	50	69	70
Mar	26	24	26	27	44	30	65	40	47	39	48	47
Apr	26	23	19	22	42	32	45	38	43	33	51	66
May	19	20	17	15	52	38	42	38	52	41	49	52
Jun	20	16	15	16	50	39	41	37	39	40	45	45
Jul	17	16	21	13	43	38	37	35	52	42	46	56
Aug	22	21	21	14	49	42	44	38	46	48	48	51
Sep	25	25	22	16	48	42	45	42	55	51		
Oct	29	24	20	16	49	49	41	37	52	53		
Nov	28	26	30	19	62	50	53	42	57	68		
Dec	29	32	31	23	60	56	51	47	65	53		

**SOURCE: Honolulu Board of Realtors® Research Department, compiled from MLS data.**

# Monthly and Y-T-D Resales Activity by Neighborhood Groups

## Comparisons Between August 2009 and 2008

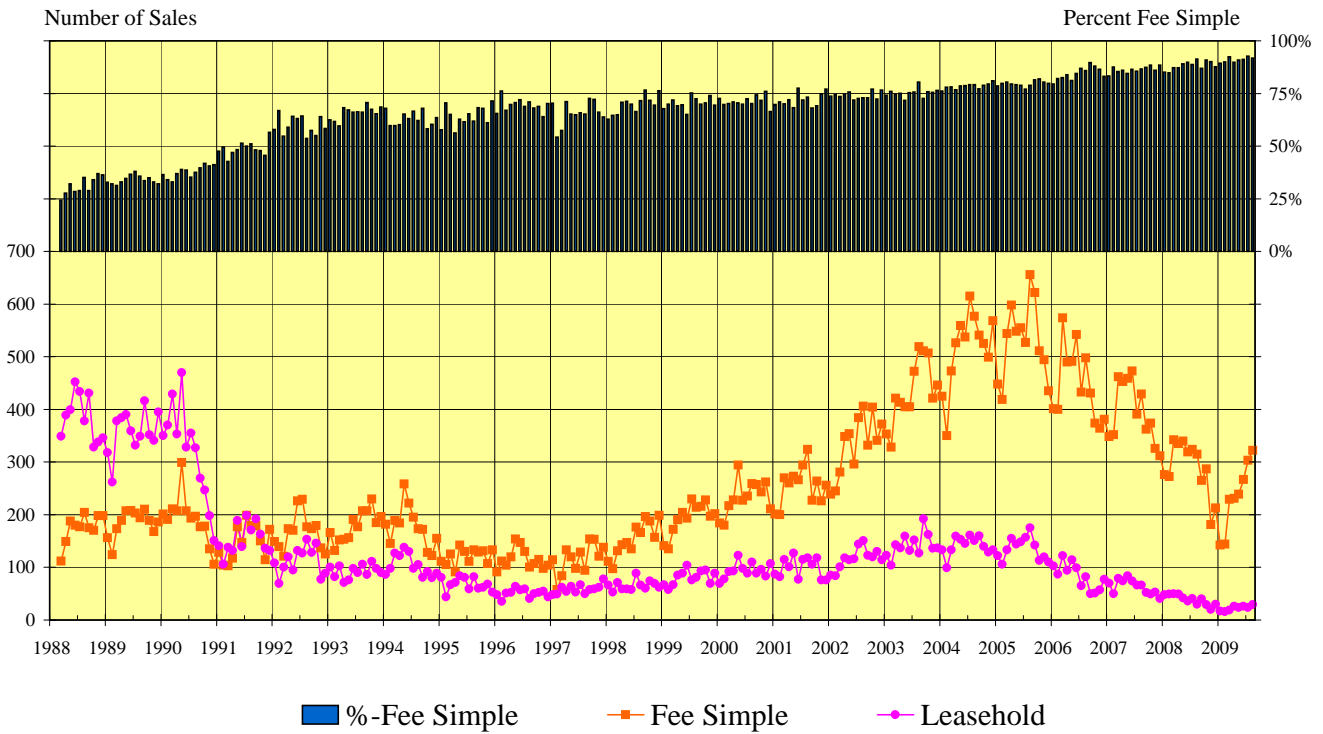
SINGLE-FAMILY HOMES												
Neighborhood Group	2009		2008		Month-to-Month		2009		2008		Year-to-Year	
	Monthly Sales		Monthly Sales		Percentage Changes		YEAR-TO-DATE		YEAR-TO-DATE		Percentage Changes	
	Num Sold	Median Sales Price	Num Sold	Median Sales Price	Number Sold	Median Price	Num Sold	Median Sales Price	Num Sold	Median Sales Price	Number Sold	Median Price
Moanalua-Kalihi	11	\$555,000	18	\$567,500	-38.9%	-2.2%	75	\$555,000	93	\$610,000	-19.4%	-9.0%
Honolulu	22	\$702,500	21	\$800,000	4.8%	-12.2%	94	\$707,500	130	\$827,500	-27.7%	-14.5%
Kapahulu-Diamond Head	9	\$850,000	17	\$850,000	-47.1%	0.0%	95	\$747,000	117	\$790,000	-18.8%	-5.4%
Waialae-Kahala	8	\$1,200,000	9	\$2,225,000	-11.1%	-46.1%	57	\$1,300,000	69	\$1,525,000	-17.4%	-14.8%
Aina Haina-Kuliouou	4	\$1,065,000	6	\$877,500	-33.3%	21.4%	33	\$875,000	45	\$885,000	-26.7%	-1.1%
Hawaii Kai	15	\$816,000	11	\$779,000	36.4%	4.7%	105	\$765,000	114	\$852,500	-7.9%	-10.3%
Kailua-Waimanalo	24	\$789,500	28	\$785,000	-14.3%	0.6%	139	\$720,000	171	\$785,000	-18.7%	-8.3%
Kaneohe	13	\$541,000	16	\$607,000	-18.8%	-10.9%	98	\$625,000	96	\$696,000	2.1%	-10.2%
Windward Coast	5	\$750,000	6	\$698,500	-16.7%	7.4%	34	\$577,500	51	\$677,000	-33.3%	-14.7%
North Shore	5	\$470,000	10	\$838,800	-50.0%	-44.0%	41	\$645,000	50	\$765,000	-18.0%	-15.7%
Wahiawa	4	\$407,500	4	\$355,000	0.0%	14.8%	26	\$408,000	37	\$419,000	-29.7%	-2.6%
Mililani	16	\$585,000	16	\$607,500	0.0%	-3.7%	137	\$585,000	180	\$606,000	-23.9%	-3.5%
Makaha-Nanakuli	13	\$255,000	14	\$369,000	-7.1%	-30.9%	97	\$282,000	126	\$389,500	-23.0%	-27.6%
Ewa Plain	43	\$473,000	42	\$469,500	2.4%	0.7%	279	\$440,000	328	\$470,000	-14.9%	-6.4%
Makakilo	14	\$447,500	11	\$500,000	27.3%	-10.5%	70	\$492,300	57	\$579,000	22.8%	-15.0%
Waipahu	23	\$470,000	9	\$550,000	155.6%	-14.5%	136	\$505,500	136	\$565,000	0.0%	-10.5%
Pearl City-Aiea	18	\$561,500	17	\$629,000	5.9%	-10.7%	103	\$550,000	119	\$635,000	-13.4%	-13.4%
<b>OVERALL OAHU</b>	<b>247</b>	<b>\$566,000</b>	<b>255</b>	<b>\$635,000</b>	<b>-3.1%</b>	<b>-10.9%</b>	<b>1,619</b>	<b>\$570,000</b>	<b>1,919</b>	<b>\$629,000</b>	<b>-15.6%</b>	<b>-9.4%</b>

CONDOMINIUMS												
Neighborhood Group	2009		2008		Month-to-Month		2009		2008		Year-to-Year	
	Monthly Sales		Monthly Sales		Percentage Changes		YEAR-TO-DATE		YEAR-TO-DATE		Percentage Changes	
	Num Sold	Median Sales Price	Num Sold	Median Sales Price	Number Sold	Median Price	Num Sold	Median Sales Price	Num Sold	Median Sales Price	Number Sold	Median Price
Moanalua-Salt Lake	11	\$267,500	9	\$246,200	22.2%	8.7%	94	\$302,500	131	\$285,000	-28.2%	6.1%
Kalihi-Palama	10	\$270,000	4	\$243,000	150.0%	11.1%	50	\$301,500	58	\$308,800	-13.8%	-2.4%
Downtown-Nuuanu	26	\$447,500	31	\$412,500	-16.1%	8.5%	139	\$340,000	237	\$426,000	-41.4%	-20.2%
Ala Moana-Kakaako	31	\$394,000	29	\$432,500	6.9%	-8.9%	189	\$386,000	231	\$500,000	-18.2%	-22.8%
Waikiki	64	\$269,000	78	\$315,000	-17.9%	-14.6%	357	\$278,000	577	\$295,000	-38.1%	-5.8%
Makiki-Moilili	53	\$295,000	47	\$330,000	12.8%	-10.6%	258	\$306,000	349	\$322,000	-26.1%	-5.0%
Kapahulu-Kuliouou	5	\$430,000	10	\$484,500	-50.0%	-11.2%	59	\$395,000	82	\$444,500	-28.0%	-11.1%
Hawaii Kai	19	\$575,000	17	\$575,000	11.8%	0.0%	117	\$485,000	137	\$545,000	-14.6%	-11.0%
Kailua-Waimanalo	6	\$371,300	12	\$388,500	-50.0%	-4.4%	43	\$380,000	62	\$400,000	-30.6%	-5.0%
Kaneohe	12	\$372,500	8	\$453,000	50.0%	-17.8%	79	\$380,000	97	\$399,900	-18.6%	-5.0%
Windward Coast	1	\$95,000	0	N/A	N/A	N/A	4	\$393,800	3	\$280,000	33.3%	40.6%
North Shore	1	\$285,000	3	\$265,000	-66.7%	7.5%	14	\$263,500	26	\$407,000	-46.2%	-35.3%
Wahiawa	2	\$140,000	1	\$259,000	100.0%	-45.9%	10	\$140,000	17	\$187,000	-41.2%	-25.1%
Mililani	17	\$315,000	27	\$295,000	-37.0%	6.8%	161	\$295,000	213	\$320,000	-24.4%	-7.8%
Makaha-Nanakuli	9	\$105,000	9	\$136,500	0.0%	-23.1%	48	\$120,000	48	\$155,000	0.0%	-22.6%
Ewa Plain	26	\$235,000	17	\$329,900	52.9%	-28.8%	119	\$270,000	171	\$305,000	-30.4%	-11.5%
Makakilo	7	\$235,000	7	\$322,000	0.0%	-27.0%	49	\$235,000	56	\$299,500	-12.5%	-21.5%
Waipahu	22	\$257,500	12	\$300,000	83.3%	-14.2%	110	\$284,000	152	\$284,500	-27.6%	-0.2%
Pearl City-Aiea	29	\$285,000	24	\$303,900	20.8%	-6.2%	158	\$283,000	221	\$305,000	-28.5%	-7.2%
<b>OVERALL OAHU</b>	<b>351</b>	<b>\$290,000</b>	<b>345</b>	<b>\$328,000</b>	<b>1.7%</b>	<b>-11.6%</b>	<b>2,058</b>	<b>\$305,000</b>	<b>2,868</b>	<b>\$330,000</b>	<b>-28.2%</b>	<b>-7.6%</b>

SOURCE: Honolulu Board of Realtors® Research Department, compiled from MLS data.

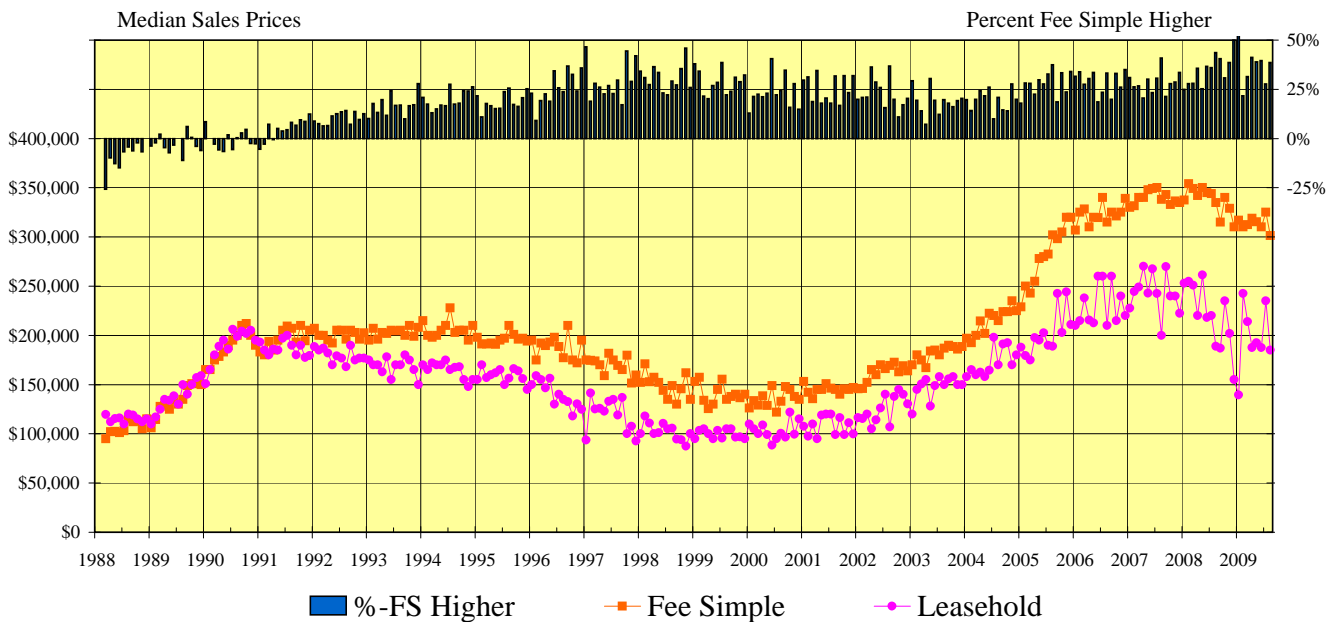
# CONDOMINIUM SALES VOLUME

## LEASEHOLD vs FEE SIMPLE, OAHU: 1988 - 2009, Monthly



# CONDOMINIUM MEDIAN SALES PRICES

## LEASEHOLD vs FEE SIMPLE, OAHU: 1988 - 2009, Monthly



SOURCE: Honolulu Board of Realtors® Research Department, compiled from MLS data.

# Statistical Summary of CONDOMINIUM REALES

## YEAR-TO-DATE Through August 31, 2009

### NUMBER OF SALES

### MEDIAN SALES PRICE

### AVERAGE SALES PRICE

		CHANGES							
2009	2008	Num	Percent	2009	2008	Percent Change	2009	2008	Percent Change

### FEE SIMPLE CONDOMINIUMS

OVERALL OAHU	1,877	2,523	-646	-25.6%	\$314,000	\$345,000	-9.0%	\$360,038	\$407,868	-11.7%
Metro Oahu	953	1,296	-343	-26.5%	\$317,000	\$357,300	-11.3%	\$378,712	\$432,362	-12.4%
East Oahu	158	194	-36	-18.6%	\$475,000	\$538,000	-11.7%	\$559,669	\$654,761	-14.5%
Windward Oahu	119	150	-31	-20.7%	\$385,000	\$409,500	-6.0%	\$389,547	\$433,630	-10.2%
North Shore	8	22	-14	-63.6%	\$257,500	\$415,000	-38.0%	\$280,738	\$516,186	-45.6%
Leeward Oahu	639	861	-222	-25.8%	\$274,500	\$299,000	-8.2%	\$278,324	\$308,112	-9.7%

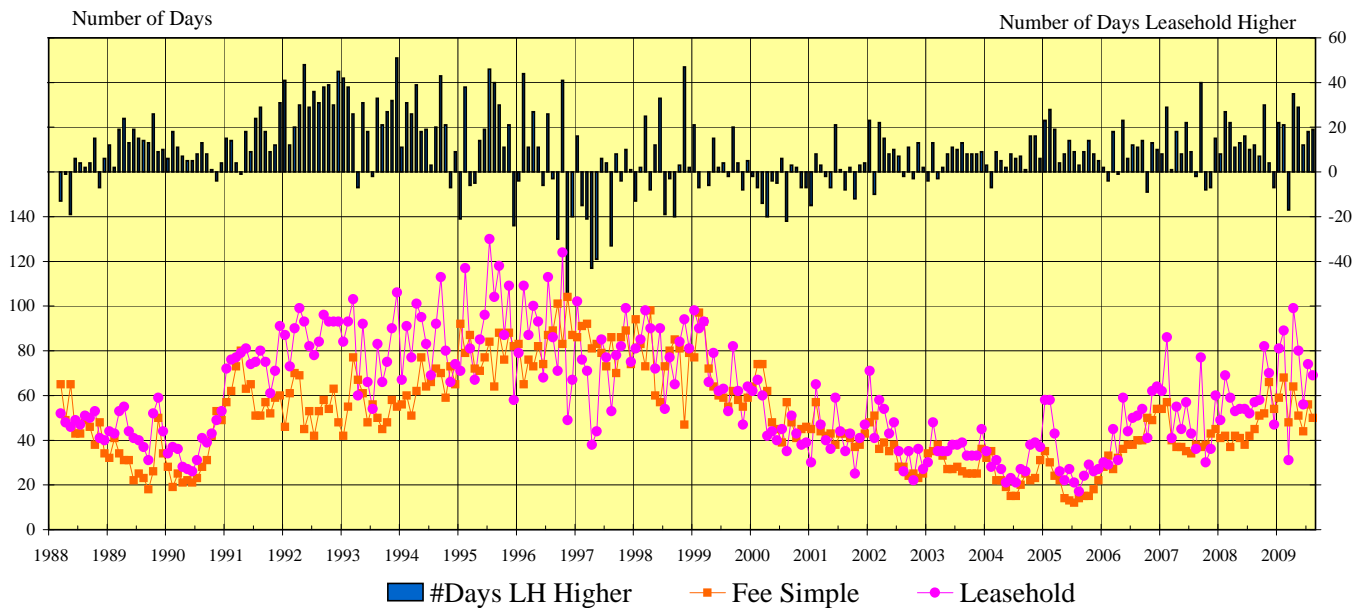
### LEASEHOLD CONDOMINIUMS

OVERALL OAHU	181	345	-164	-47.5%	\$199,000	\$240,000	-17.1%	\$216,674	\$267,352	-19.0%
Metro Oahu	134	287	-153	-53.3%	\$190,000	\$225,000	-15.6%	\$218,522	\$248,493	-12.1%
East Oahu	18	25	-7	-28.0%	\$216,100	\$400,000	-46.0%	\$215,954	\$466,923	-53.7%
Windward Oahu	7	12	-5	-41.7%	\$240,000	\$267,500	-10.3%	\$256,286	\$264,792	-3.2%
North Shore	6	4	2	50.0%	\$295,000	\$398,000	-25.9%	\$311,917	\$402,125	-22.4%
Leeward Oahu	16	17	-1	-5.9%	\$143,000	\$190,000	-24.7%	\$148,956	\$262,350	-43.2%

## CONDOMINIUM DAYS ON MARKET

between Listing Date and Contract Date

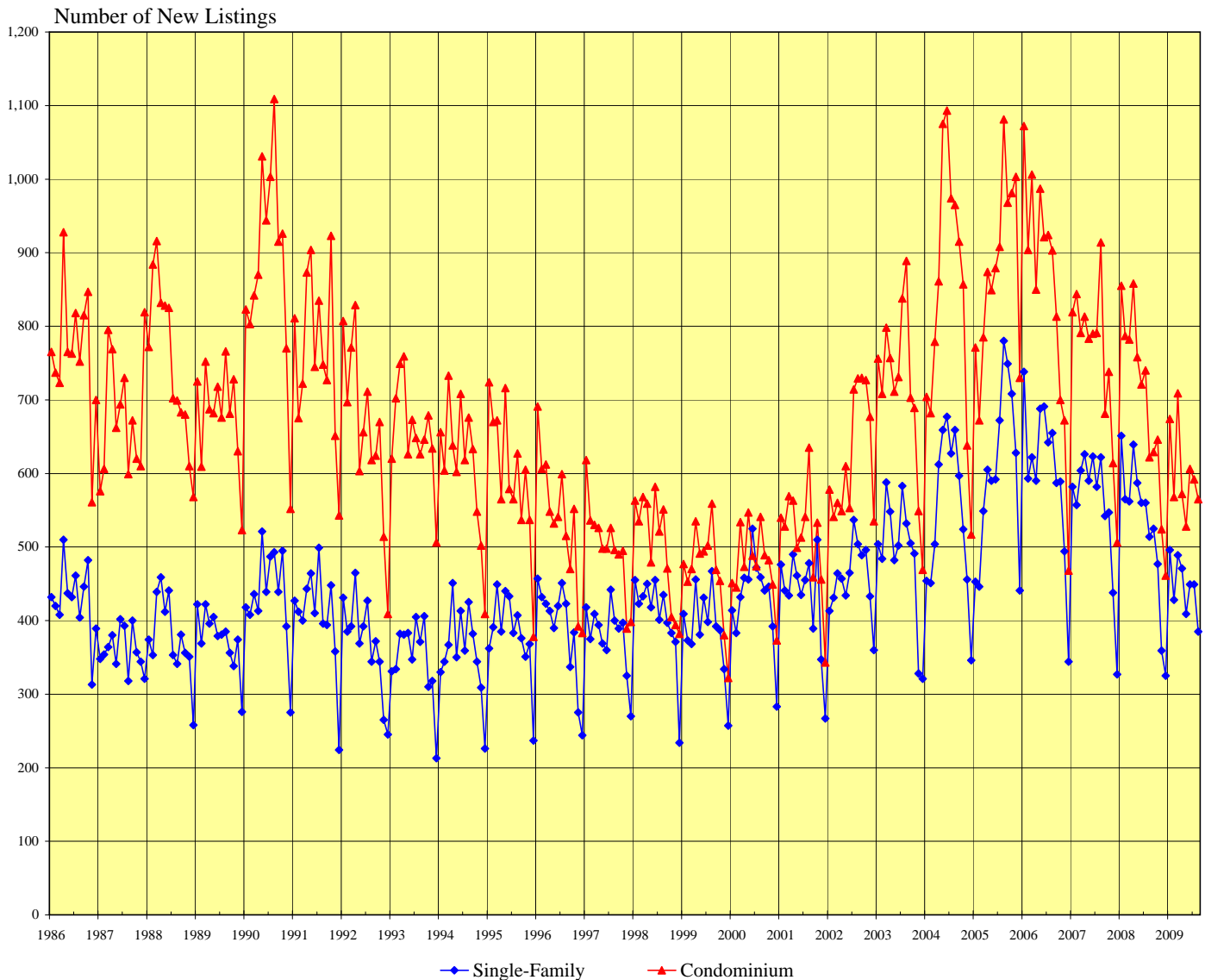
LEASEHOLD vs FEE SIMPLE, OAHU: 1988 - 2009, Monthly



SOURCE: Honolulu Board of Realtors® Research Department, compiled from MLS data.

# NUMBER OF NEW RESIDENTIAL LISTINGS

## OAHU, HAWAII: 1986 - 2009, Monthly

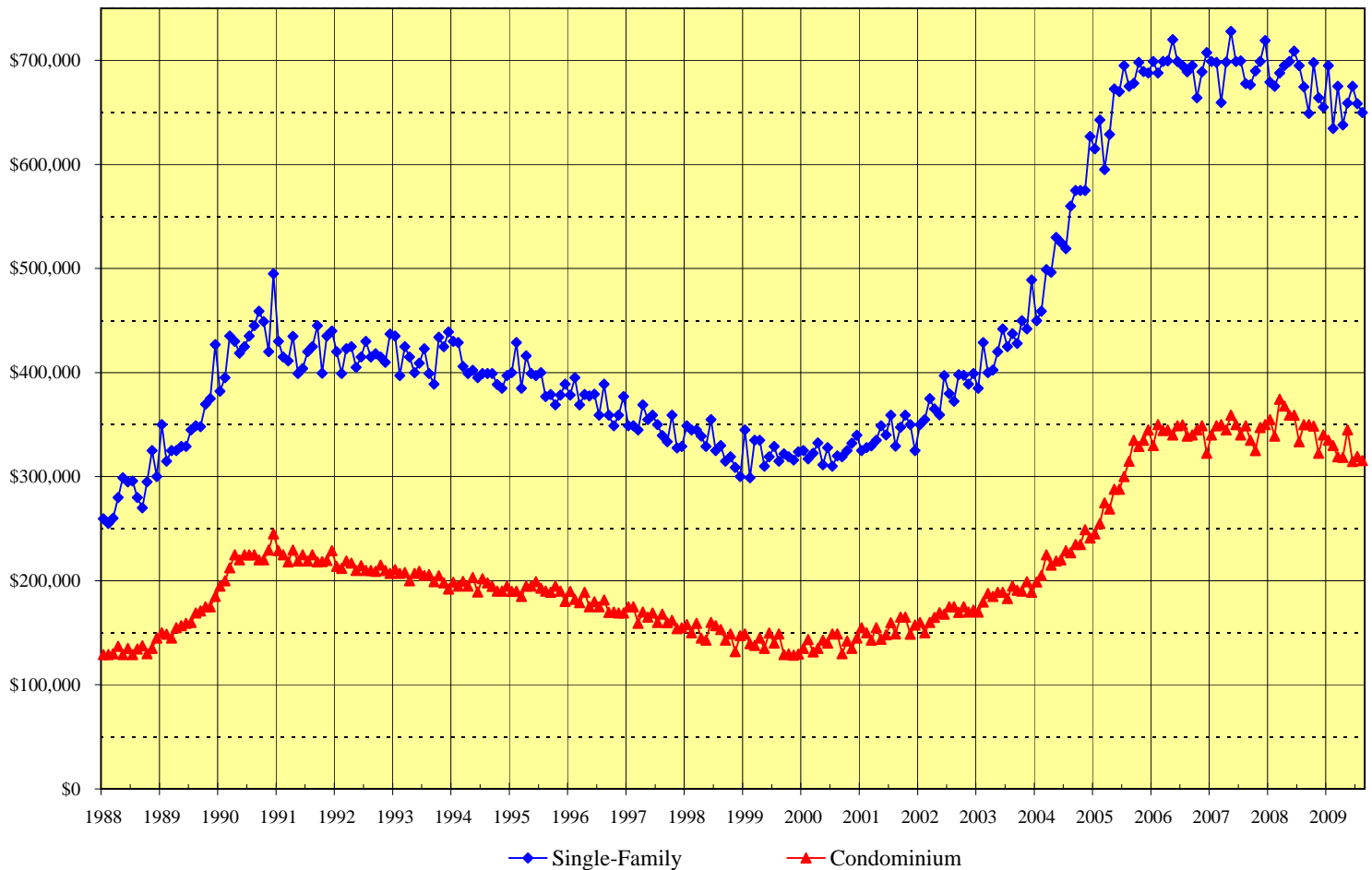


Month	2004		2005		2006		2007		2008		2009	
	Single-Family	Condo	Single-Family	Condo	Single-Family	Condo	Single-Family	Condo	Single-Family	Condo	Single-Family	Condo
Jan	454	704	453	771	738	1,072	582	819	651	855	496	674
Feb	451	682	446	672	593	904	557	844	565	787	428	568
Mar	504	779	549	785	622	1,006	604	791	562	782	489	709
Apr	612	861	605	874	590	850	626	813	639	858	471	572
May	659	1,075	590	849	688	987	590	783	587	758	409	528
Jun	677	1,093	592	879	691	921	623	790	560	721	449	606
Jul	627	974	672	908	642	924	582	791	560	740	449	592
Aug	659	965	780	1,081	655	903	622	914	514	622	385	565
Sep	597	915	749	968	587	813	542	681	525	629		
Oct	524	857	708	981	589	700	547	738	477	646		
Nov	456	638	628	1,003	494	672	438	614	359	524		
Dec	346	517	441	730	344	468	327	506	325	461		

SOURCE: Honolulu Board of Realtors® Research Department, compiled from MLS data.

# MEDIAN LIST PRICES OF NEW RESIDENTIAL LISTINGS

## OAHU, HAWAII: 1986 - 2009, Monthly



Month	2005		2006		2007		2008		2009	
	Single-Family	Condo	Single-Family	Condo	Single-Family	Condo	Single-Family	Condo	Single-Family	Condo
Jan	\$615,000	\$245,000	\$699,000	\$330,000	\$698,900	\$340,000	\$679,000	\$355,000	\$695,000	\$335,000
Feb	\$642,900	\$255,000	\$688,000	\$350,000	\$698,000	\$349,000	\$675,000	\$339,000	\$634,500	\$329,900
Mar	\$595,000	\$275,000	\$699,000	\$344,500	\$659,500	\$350,000	\$688,000	\$374,500	\$675,000	\$319,000
Apr	\$629,000	\$269,000	\$699,500	\$345,000	\$698,500	\$345,000	\$695,000	\$368,000	\$638,000	\$318,500
May	\$672,500	\$288,000	\$720,000	\$340,000	\$728,000	\$359,000	\$699,000	\$359,000	\$659,000	\$345,000
Jun	\$670,000	\$287,800	\$699,000	\$349,000	\$699,000	\$350,000	\$709,000	\$359,000	\$675,000	\$314,500
Jul	\$695,000	\$300,000	\$695,000	\$349,700	\$699,500	\$340,000	\$695,000	\$333,500	\$658,500	\$319,500
Aug	\$675,000	\$314,900	\$689,000	\$339,000	\$677,700	\$349,000	\$674,500	\$350,000	\$649,900	\$315,300
Sep	\$678,000	\$335,000	\$695,000	\$340,000	\$676,500	\$335,000	\$649,000	\$350,000		
Oct	\$698,000	\$329,000	\$664,000	\$345,000	\$689,900	\$325,000	\$697,800	\$348,500		
Nov	\$689,300	\$335,000	\$689,000	\$349,000	\$699,000	\$347,300	\$664,000	\$322,500		
Dec	\$688,000	\$345,000	\$707,500	\$322,500	\$719,000	\$350,000	\$655,000	\$340,000		

**SOURCE: Honolulu Board of Realtors® Research Department, compiled from MLS data.**

# New Listing Activity by Neighborhood Groups

## Comparisons Between August 2009 and 2008

### SINGLE-FAMILY HOMES

Neighborhood Group	Current Month		Same Month Last Year		Changes Since Last Year	
	Number	Median	Number	Median	Number	Median
		List Price		List Price		List Price
Moanalua-Kalihi	26	\$610,500	17	\$748,000	52.9%	-18.4%
Honolulu	35	\$798,800	26	\$982,500	34.6%	-18.7%
Kapahulu-Diamond Head	32	\$659,500	37	\$825,000	-13.5%	-20.1%
Waialae-Kahala	12	\$1,532,500	14	\$2,060,000	-14.3%	-25.6%
Aina Haina-Kuliouou	5	\$739,000	10	\$1,221,500	-50.0%	-39.5%
Hawaii Kai	24	\$959,500	35	\$950,000	-31.4%	1.0%
Kailua-Waimanalo	36	\$926,900	44	\$830,000	-18.2%	11.7%
Kaneohe	32	\$777,000	50	\$825,000	-36.0%	-5.8%
Windward Coast	12	\$669,000	11	\$669,000	9.1%	0.0%
North Shore	10	\$1,073,000	26	\$846,500	-61.5%	26.8%
Wahiawa	11	\$480,000	12	\$597,000	-8.3%	-19.6%
Mililani	23	\$585,000	27	\$610,000	-14.8%	-4.1%
Makaha-Nanakuli	25	\$300,000	46	\$418,900	-45.7%	-28.4%
Ewa Plain	50	\$452,500	80	\$479,300	-37.5%	-5.6%
Makakilo	14	\$514,000	23	\$575,000	-39.1%	-10.6%
Waipahu	22	\$535,000	39	\$570,000	-43.6%	-6.1%
Pearl City-Aiea	16	\$595,000	17	\$595,000	-5.9%	0.0%
<b>OVERALL OAHU</b>	<b>385</b>	<b>\$649,900</b>	<b>514</b>	<b>\$674,500</b>	<b>-25.1%</b>	<b>-3.6%</b>

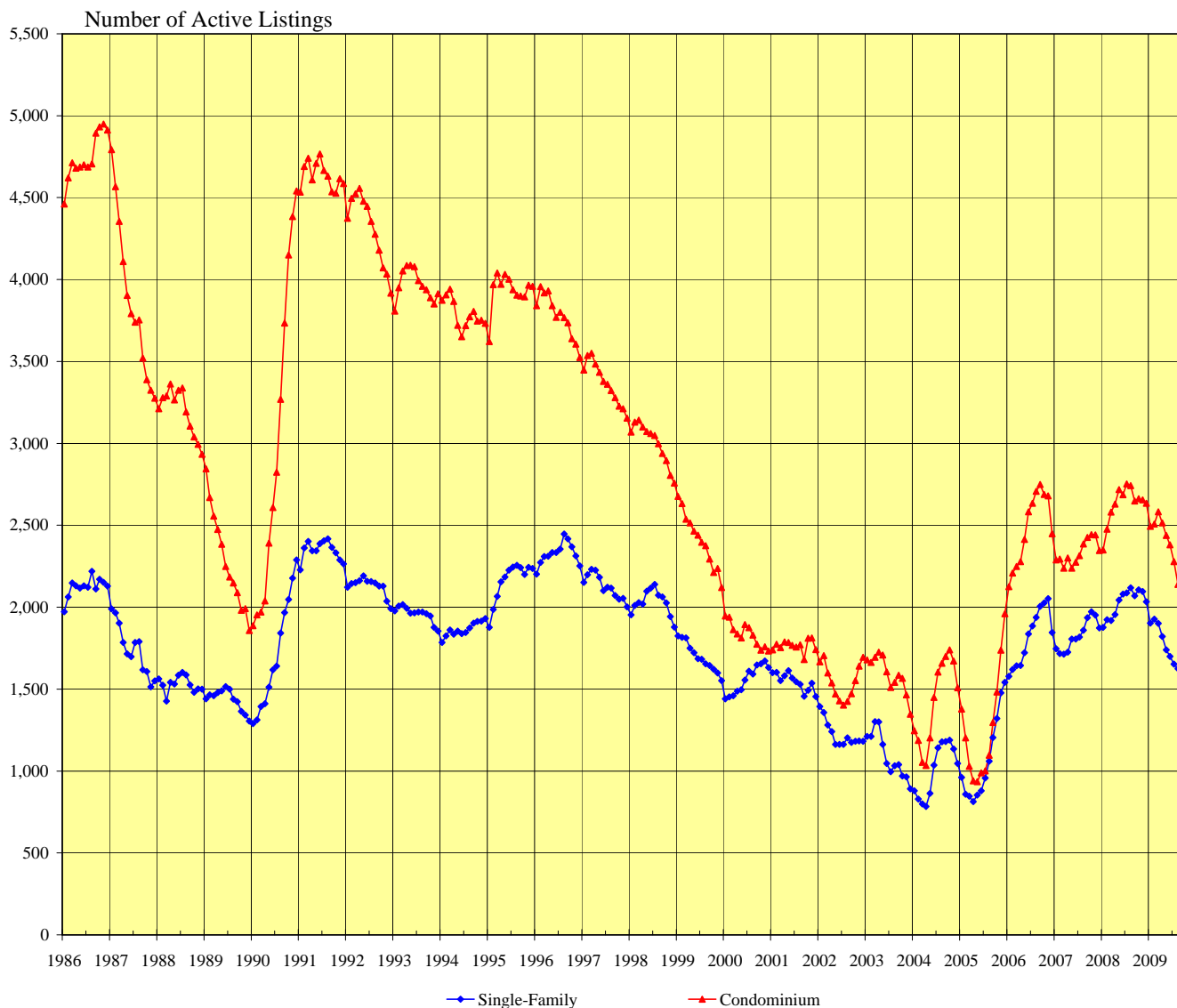
### CONDOMINIUMS

Neighborhood Group	Current Month		Same Month Last Year		Changes Since Last Year	
	Number	Median	Number	Median	Number	Median
		List Price		List Price		List Price
Moanalua-Salt Lake	21	\$274,000	29	\$385,000	-27.6%	-28.8%
Kalihi-Palama	7	\$275,000	14	\$431,800	-50.0%	-36.3%
Downtown-Nuuanu	39	\$399,000	45	\$368,900	-13.3%	8.2%
Ala Moana-Kakaako	55	\$415,000	63	\$530,000	-12.7%	-21.7%
Waikiki	141	\$269,000	131	\$340,000	7.6%	-20.9%
Makiki-Moiliili	78	\$294,000	58	\$338,000	34.5%	-13.0%
Kapahulu-Kuliouou	16	\$422,500	17	\$449,000	-5.9%	-5.9%
Hawaii Kai	27	\$499,000	34	\$585,000	-20.6%	-14.7%
Kailua-Waimanalo	6	\$383,000	21	\$530,000	-71.4%	-27.7%
Kaneohe	18	\$357,000	22	\$429,500	-18.2%	-16.9%
Windward Coast	1	\$339,000	2	\$362,000	-50.0%	-6.4%
North Shore	5	\$579,000	9	\$287,000	-44.4%	101.7%
Wahiawa	5	\$148,000	4	\$184,500	25.0%	-19.8%
Mililani	34	\$289,500	32	\$307,000	6.3%	-5.7%
Makaha-Nanakuli	19	\$135,900	18	\$182,400	5.6%	-25.5%
Ewa Plain	30	\$311,000	41	\$300,000	-26.8%	3.7%
Makakilo	10	\$298,000	14	\$285,000	-28.6%	4.6%
Waipahu	23	\$285,000	26	\$270,000	-11.5%	5.6%
Pearl City-Aiea	31	\$250,000	42	\$294,000	-26.2%	-15.0%
<b>OVERALL OAHU</b>	<b>566</b>	<b>\$315,300</b>	<b>622</b>	<b>\$350,000</b>	<b>-9.0%</b>	<b>-9.9%</b>

SOURCE: Honolulu Board of Realtors® Research Department, compiled from MLS data.

# INVENTORY OF ACTIVE RESIDENTIAL LISTINGS

## OAHU, HAWAII: 1986 - 2009, Monthly

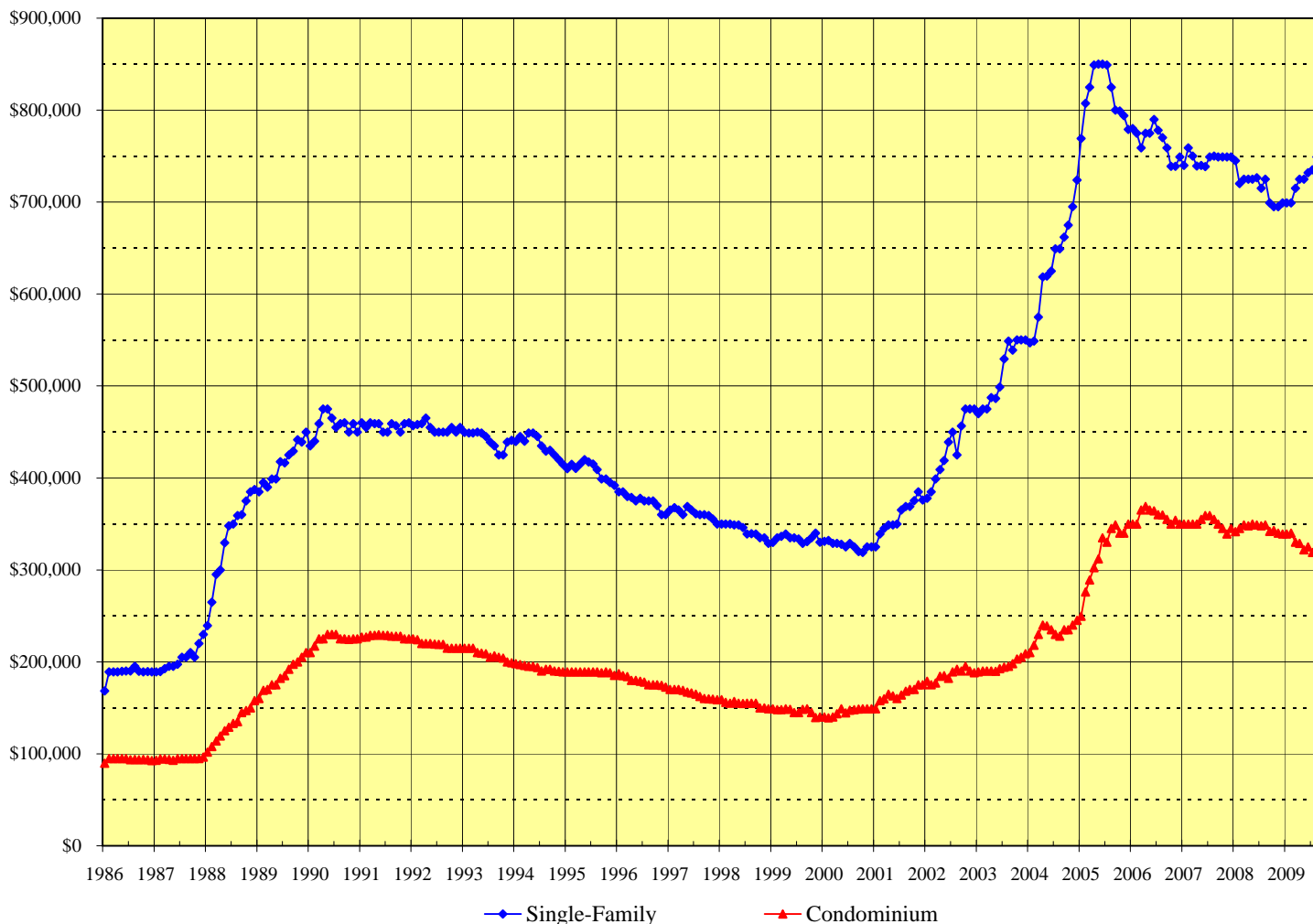


<u>Month</u>	<b>2004</b>		<b>2005</b>		<b>2006</b>		<b>2007</b>		<b>2008</b>		<b>2009</b>	
	<u>Single-Family</u>	<u>Condo</u>	<u>Single-Family</u>	<u>Condo</u>	<u>Single-Family</u>	<u>Condo</u>	<u>Single-Family</u>	<u>Condo</u>	<u>Single-Family</u>	<u>Condo</u>	<u>Single-Family</u>	<u>Condo</u>
Jan	880	1,246	961	1,378	1,578	2,125	1,747	2,288	1,876	2,349	1,903	2,494
Feb	829	1,187	858	1,202	1,619	2,209	1,717	2,294	1,924	2,476	1,928	2,507
Mar	800	1,053	847	1,029	1,642	2,248	1,714	2,238	1,919	2,581	1,901	2,582
Apr	784	1,034	814	940	1,644	2,278	1,726	2,301	1,955	2,629	1,822	2,514
May	864	1,203	854	935	1,722	2,413	1,805	2,238	2,043	2,717	1,739	2,438
Jun	1,036	1,450	879	988	1,836	2,582	1,806	2,275	2,080	2,687	1,700	2,381
Jul	1,141	1,604	958	1,001	1,885	2,634	1,818	2,315	2,087	2,753	1,653	2,279
Aug	1,179	1,658	1,060	1,097	1,937	2,707	1,859	2,386	2,119	2,743	1,624	2,140
Sep	1,180	1,699	1,205	1,296	2,005	2,750	1,936	2,426	2,069	2,649		
Oct	1,189	1,739	1,321	1,483	2,026	2,689	1,973	2,444	2,107	2,663		
Nov	1,134	1,672	1,477	1,737	2,052	2,679	1,952	2,442	2,096	2,655		
Dec	1,046	1,508	1,542	1,961	1,846	2,448	1,874	2,346	2,033	2,634		

**SOURCE: Honolulu Board of Realtors® Research Department, compiled from MLS data.**

# MEDIAN LIST PRICES OF THE ACTIVE INVENTORY

## OAHU, HAWAII: 1986 - 2009, Monthly



Month	2005		2006		2007		2008		2009	
	Single-Family	Condo	Single-Family	Condo	Single-Family	Condo	Single-Family	Condo	Single-Family	Condo
Jan	\$769,000	\$249,700	\$780,000	\$349,800	\$740,000	\$350,000	\$745,000	\$341,500	\$699,000	\$339,000
Feb	\$807,500	\$276,000	\$775,000	\$350,000	\$759,000	\$350,000	\$720,000	\$345,000	\$699,000	\$340,000
Mar	\$825,000	\$289,000	\$759,000	\$365,000	\$749,900	\$350,000	\$725,000	\$349,000	\$715,000	\$330,000
Apr	\$849,000	\$302,500	\$775,000	\$369,000	\$739,300	\$350,000	\$725,000	\$348,000	\$725,000	\$329,000
May	\$850,000	\$312,000	\$775,000	\$365,000	\$739,900	\$355,000	\$725,000	\$349,900	\$725,000	\$322,000
Jun	\$850,000	\$335,000	\$790,000	\$364,300	\$738,500	\$359,000	\$726,500	\$349,000	\$732,000	\$325,000
Jul	\$849,000	\$330,000	\$778,000	\$360,000	\$749,000	\$359,000	\$715,000	\$348,000	\$735,000	\$319,000
Aug	\$825,000	\$345,000	\$770,000	\$359,900	\$750,000	\$355,000	\$725,000	\$349,000	\$749,000	\$320,000
Sep	\$800,000	\$349,000	\$759,000	\$355,000	\$749,000	\$349,900	\$699,000	\$342,000		
Oct	\$799,000	\$340,000	\$739,000	\$350,000	\$749,000	\$345,000	\$695,000	\$343,000		
Nov	\$794,000	\$340,000	\$739,000	\$354,000	\$749,000	\$338,900	\$695,000	\$340,000		
Dec	\$779,000	\$350,000	\$749,000	\$350,000	\$749,000	\$345,000	\$699,000	\$339,000		

**SOURCE: Honolulu Board of Realtors® Research Department, compiled from MLS data.**

# Availability of Housing on Oahu

## Comparisons Between August 2009 and 2008

SINGLE-FAMILY HOMES										
Neighborhood Group	Current Month		Last Month		Changes Since Last Month		Same Month Last Year		Changes Since Last Year	
	Number	Median	Number	Median	Number	MLP	Number	Median	Number	MLP
	Active	List Price	Active	List Price	Active	MLP	Active	List Price	Active	MLP
Moanalua-Kalihi	93	\$630,000	92	\$589,000	1.1%	7.0%	101	\$698,000	-7.9%	-9.7%
Honolulu	108	\$988,500	99	\$939,000	9.1%	5.3%	98	\$977,000	10.2%	1.2%
Kapahulu-Diamond Head	126	\$982,500	116	\$1,024,500	8.6%	-4.1%	104	\$1,085,500	21.2%	-9.5%
Waialae-Kahala	81	\$1,895,000	77	\$1,975,000	5.2%	-4.1%	105	\$2,195,000	-22.9%	-13.7%
Aina Haina-Kuliouou	48	\$2,144,400	43	\$2,288,900	11.6%	-6.3%	53	\$1,895,000	-9.4%	13.2%
Hawaii Kai	101	\$1,288,000	113	\$1,119,000	-10.6%	15.1%	139	\$1,095,000	-27.3%	17.6%
Kailua-Waimanalo	158	\$1,124,500	176	\$1,050,000	-10.2%	7.1%	189	\$980,000	-16.4%	14.7%
Kaneohe	91	\$779,000	94	\$785,000	-3.2%	-0.8%	133	\$799,000	-31.6%	-2.5%
Windward Coast	73	\$720,000	75	\$720,000	-2.7%	0.0%	87	\$799,000	-16.1%	-9.9%
North Shore	123	\$1,100,000	122	\$993,500	0.8%	10.7%	130	\$1,150,000	-5.4%	-4.3%
Wahiawa	34	\$514,500	34	\$504,500	0.0%	2.0%	38	\$557,000	-10.5%	-7.6%
Mililani	55	\$585,000	51	\$599,000	7.8%	-2.3%	112	\$655,500	-50.9%	-10.8%
Makaha-Nanakuli	132	\$353,000	140	\$349,500	-5.7%	1.0%	175	\$375,000	-24.6%	-5.9%
Ewa Plain	203	\$496,000	212	\$495,500	-4.2%	0.1%	361	\$529,000	-43.8%	-6.2%
Makakilo	47	\$529,000	57	\$554,900	-17.5%	-4.7%	73	\$580,000	-35.6%	-8.8%
Waipahu	73	\$549,000	81	\$549,000	-9.9%	0.0%	135	\$585,000	-45.9%	-6.2%
Pearl City-Aiea	78	\$598,000	71	\$599,000	9.9%	-0.2%	86	\$662,000	-9.3%	-9.7%
<b>OVERALL OAHU</b>	<b>1,624</b>	<b>\$749,000</b>	<b>1,653</b>	<b>\$735,000</b>	<b>-1.8%</b>	<b>1.9%</b>	<b>2,119</b>	<b>\$725,000</b>	<b>-23.4%</b>	<b>3.3%</b>

CONDOMINIUMS										
Neighborhood Group	Current Month		Last Month		Changes Since Last Month		Same Month Last Year		Changes Since Last Year	
	Number	Median	Number	Median	Number	MLP	Number	Median	Number	MLP
	Active	List Price	Active	List Price	Active	MLP	Active	List Price	Active	MLP
Moanalua-Salt Lake	41	\$268,000	48	\$271,500	-14.6%	-1.3%	69	\$304,200	-40.6%	-11.9%
Kalihi-Palama	43	\$369,000	44	\$354,000	-2.3%	4.2%	48	\$420,200	-10.4%	-12.2%
Downtown-Nuuanu	168	\$490,000	193	\$479,000	-13.0%	2.3%	214	\$550,000	-21.5%	-10.9%
Ala Moana-Kakaako	235	\$430,000	244	\$430,000	-3.7%	0.0%	295	\$428,000	-20.3%	0.5%
Waikiki	619	\$299,900	642	\$302,500	-3.6%	-0.9%	688	\$349,900	-10.0%	-14.3%
Makiki-Moiliili	198	\$331,900	218	\$319,000	-9.2%	4.0%	264	\$338,500	-25.0%	-1.9%
Kapahulu-Kuliouou	106	\$531,500	106	\$531,500	0.0%	0.0%	111	\$469,000	-4.5%	13.3%
Hawaii Kai	59	\$547,000	71	\$555,000	-16.9%	-1.4%	125	\$585,000	-52.8%	-6.5%
Kailua-Waimanalo	25	\$455,000	31	\$455,000	-19.4%	0.0%	33	\$499,000	-24.2%	-8.8%
Kaneohe	60	\$376,600	60	\$391,500	0.0%	-3.8%	88	\$418,000	-31.8%	-9.9%
Windward Coast	19	\$290,000	20	\$287,500	-5.0%	0.9%	29	\$295,000	-34.5%	-1.7%
North Shore	45	\$546,000	47	\$414,000	-4.3%	31.9%	59	\$408,000	-23.7%	33.8%
Wahiawa	14	\$176,500	15	\$178,000	-6.7%	-0.8%	16	\$184,300	-12.5%	-4.2%
Mililani	100	\$269,000	101	\$279,900	-1.0%	-3.9%	118	\$299,500	-15.3%	-10.2%
Makaha-Nanakuli	101	\$140,000	104	\$149,000	-2.9%	-6.0%	153	\$175,000	-34.0%	-20.0%
Ewa Plain	123	\$310,000	133	\$298,000	-7.5%	4.0%	167	\$325,000	-26.3%	-4.6%
Makakilo	47	\$294,500	44	\$295,000	6.8%	-0.2%	60	\$290,000	-21.7%	1.6%
Waipahu	55	\$270,000	67	\$243,000	-17.9%	11.1%	81	\$275,000	-32.1%	-1.8%
Pearl City-Aiea	82	\$277,500	91	\$275,000	-9.9%	0.9%	125	\$310,000	-34.4%	-10.5%
<b>OVERALL OAHU</b>	<b>2,140</b>	<b>\$320,000</b>	<b>2,279</b>	<b>\$319,000</b>	<b>-6.1%</b>	<b>0.3%</b>	<b>2,743</b>	<b>\$349,000</b>	<b>-22.0%</b>	<b>-8.3%</b>

SOURCE: Honolulu Board of Realtors® Research Department, compiled from MLS data.

# Available Condominiums on Oahu by Land Tenure

## Comparisons Between August 2009 and 2008

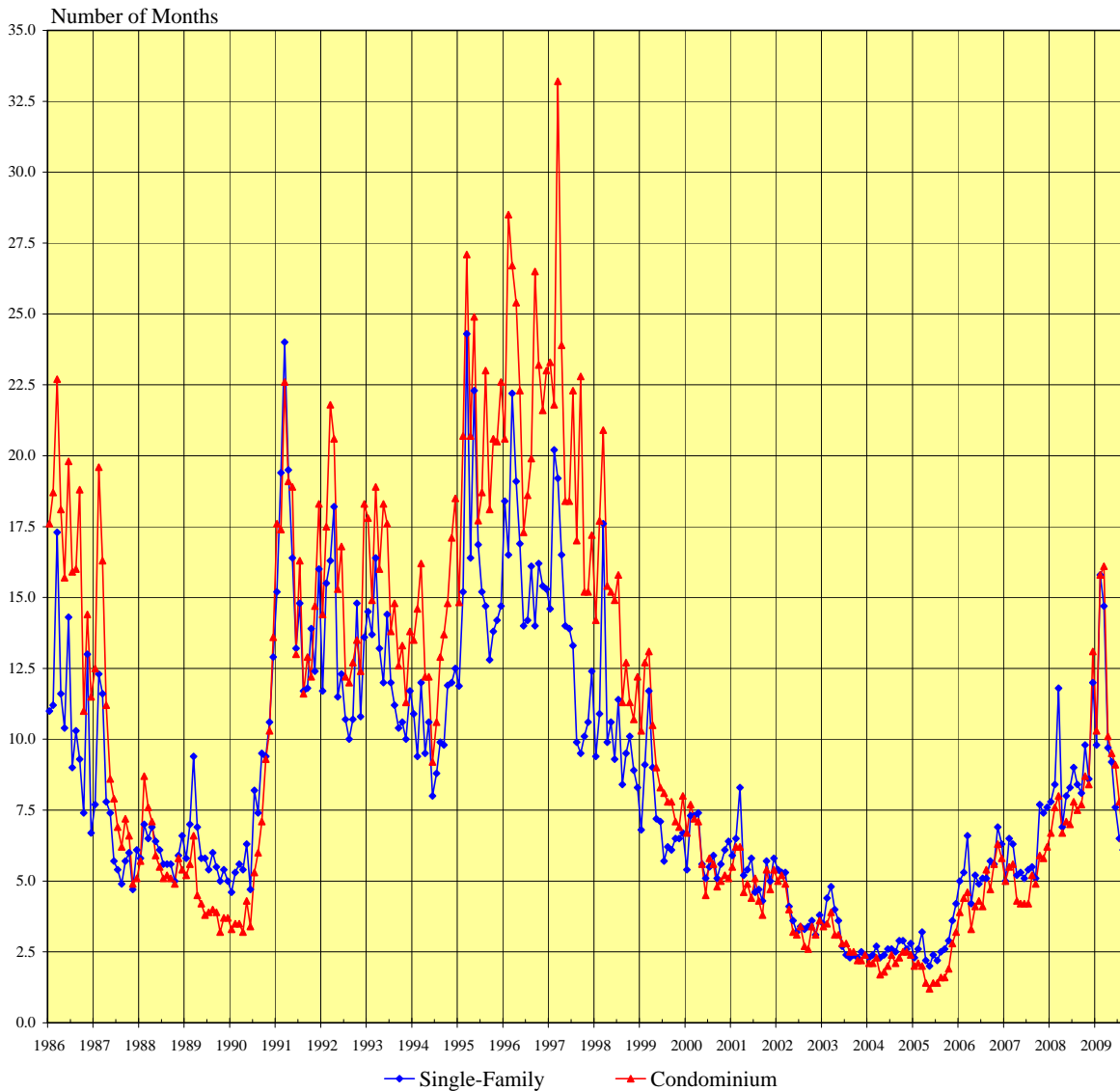
<b>FEE SIMPLE CONDOMINIUMS</b>									
Neighborhood Group	Current Month			Same Month Last Year			Changes from Last Year		
	Number Active	Median	Percent of Inventory	Number Active	Median List Price	Percent of Inventory	Number Active	MLP	Tenure Percent
Moanalua-Salt Lake	36	\$275,500	87.8%	63	\$315,000	91.3%	-42.9%	-12.5%	-3.5%
Kalihi-Palama	43	\$369,000	100.0%	44	\$434,300	91.7%	-2.3%	-15.0%	8.3%
Downtown-Nuuanu	122	\$622,400	72.6%	183	\$600,000	85.5%	-33.3%	3.7%	-12.9%
Ala Moana-Kakaako	217	\$450,000	92.3%	282	\$432,500	95.6%	-23.0%	4.0%	-3.3%
Waikiki	457	\$350,000	73.8%	508	\$395,000	73.8%	-10.0%	-11.4%	0.0%
Makiki-Moilili	160	\$340,600	80.8%	205	\$339,500	77.7%	-22.0%	0.3%	3.2%
Kapahulu-Kuliouou	73	\$795,000	68.9%	56	\$823,200	50.5%	30.4%	-3.4%	18.4%
Hawaii Kai	56	\$549,000	94.9%	125	\$585,000	100.0%	-55.2%	-6.2%	-5.1%
Kailua-Waimanalo	22	\$457,500	88.0%	30	\$504,600	90.9%	-26.7%	-9.3%	-2.9%
Kaneohe	51	\$401,000	85.0%	81	\$429,000	92.0%	-37.0%	-6.5%	-7.0%
Windward Coast	19	\$290,000	100.0%	27	\$300,000	93.1%	-29.6%	-3.3%	6.9%
North Shore	30	\$769,000	66.7%	41	\$525,000	69.5%	-26.8%	46.5%	-2.8%
Wahiawa	12	\$184,000	85.7%	10	\$192,000	62.5%	20.0%	-4.2%	23.2%
Mililani	99	\$269,000	99.0%	115	\$304,900	97.5%	-13.9%	-11.8%	1.5%
Makaha-Nanakuli	95	\$144,000	94.1%	145	\$175,000	94.8%	-34.5%	-17.7%	-0.7%
Ewa Plain	123	\$310,000	100.0%	167	\$325,000	100.0%	-26.3%	-4.6%	0.0%
Makakilo	46	\$294,800	97.9%	60	\$290,000	100.0%	-23.3%	1.7%	-2.1%
Waipahu	55	\$270,000	100.0%	80	\$280,000	98.8%	-31.3%	-3.6%	1.2%
Pearl City-Aiea	76	\$287,500	92.7%	113	\$321,000	90.4%	-32.7%	-10.4%	2.3%
<b>All FEE SIMPLE</b>	<b>1,792</b>	<b>\$349,000</b>	<b>83.7%</b>	<b>2,335</b>	<b>\$360,000</b>	<b>85.1%</b>	<b>-23.3%</b>	<b>-3.1%</b>	<b>-1.4%</b>

<b>LEASEHOLD CONDOMINIUMS</b>									
Neighborhood Group	Current Month			Same Month Last Year			Changes from Last Year		
	Number Active	Median List Price	Percent of Inventory	Number Active	Median List Price	Percent of Inventory	Number Active	MLP	Tenure Percent
Moanalua-Salt Lake	5	\$155,000	12.2%	6	\$141,000	8.7%	-16.7%	9.9%	3.5%
Kalihi-Palama	0	N/A	0.0%	4	\$162,000	8.3%	-100.0%	N/A	-8.3%
Downtown-Nuuanu	46	\$199,000	27.4%	31	\$255,000	14.5%	48.4%	-22.0%	12.9%
Ala Moana-Kakaako	18	\$274,500	7.7%	13	\$335,000	4.4%	38.5%	-18.1%	3.3%
Waikiki	162	\$199,000	26.2%	180	\$240,000	26.2%	-10.0%	-17.1%	0.0%
Makiki-Moilili	38	\$296,900	19.2%	59	\$335,000	22.3%	-35.6%	-11.4%	-3.2%
Kapahulu-Kuliouou	33	\$260,000	31.1%	55	\$300,000	49.5%	-40.0%	-13.3%	-18.4%
Hawaii Kai	3	\$450,000	5.1%	0	N/A	0.0%	N/A	N/A	5.1%
Kailua-Waimanalo	3	\$449,000	12.0%	3	\$339,000	9.1%	0.0%	32.4%	2.9%
Kaneohe	9	\$229,000	15.0%	7	\$319,000	8.0%	28.6%	-28.2%	7.0%
Windward Coast	0	N/A	0.0%	2	\$164,500	6.9%	-100.0%	N/A	-6.9%
North Shore	15	\$275,000	33.3%	18	\$305,000	30.5%	-16.7%	-9.8%	2.8%
Wahiawa	2	\$157,500	14.3%	6	\$178,500	37.5%	-66.7%	-11.8%	-23.2%
Mililani	1	\$194,500	1.0%	3	\$215,000	2.5%	-66.7%	-9.5%	-1.5%
Makaha-Nanakuli	6	\$87,500	5.9%	8	\$242,500	5.2%	-25.0%	-63.9%	0.7%
Ewa Plain	0	N/A	0.0%	0	N/A	0.0%	N/A	N/A	0.0%
Makakilo	1	\$249,900	2.1%	0	N/A	0.0%	N/A	N/A	2.1%
Waipahu	0	N/A	0.0%	1	\$175,000	1.2%	-100.0%	N/A	-1.2%
Pearl City-Aiea	6	\$187,500	7.3%	12	\$214,500	9.6%	-50.0%	-12.6%	-2.3%
<b>All LEASEHOLD</b>	<b>348</b>	<b>\$219,400</b>	<b>16.3%</b>	<b>408</b>	<b>\$259,000</b>	<b>14.9%</b>	<b>-14.7%</b>	<b>-15.3%</b>	<b>1.4%</b>

**SOURCE: Honolulu Board of Realtors® Research Department, compiled from MLS data.**

# MONTHS OF INVENTORY REMAINING

## OAHU, HAWAII: 1986 - 2009, Monthly



Month	2003		2004		2005		2006		2007		2008		2009	
	SF	CO	SF	CO	SF	CO	SF	CO	SF	CO	SF	CO	SF	CO
Jan	3.5	3.4	2.3	2.1	2.3	2.0	5.0	3.9	5.0	5.0	7.8	6.7	9.8	10.3
Feb	4.4	3.5	2.4	2.1	2.6	2.1	5.3	4.4	6.5	5.5	8.4	7.6	15.8	15.8
Mar	4.8	3.9	2.7	2.3	3.2	2.0	6.6	4.6	6.3	5.6	11.8	8.0	14.7	16.1
Apr	4.0	3.1	2.3	1.7	2.2	1.4	4.2	3.3	5.2	4.3	6.9	6.7	9.7	10.1
May	3.6	3.1	2.4	1.8	2.0	1.2	5.2	4.1	5.3	4.2	8.0	7.1	9.2	9.5
Jun	2.7	2.8	2.6	2.0	2.4	1.4	4.9	4.3	5.1	4.2	8.3	7.0	7.6	9.1
Jul	2.4	2.8	2.6	2.4	2.2	1.4	5.1	4.1	5.4	4.2	9.0	7.8	6.5	7.8
Aug	2.3	2.5	2.5	2.1	2.5	1.6	5.1	5.4	5.5	5.2	8.4	7.5	6.1	6.5
Sep	2.4	2.5	2.9	2.3	2.6	1.6	5.7	4.7	5.1	4.9	8.1	7.7		
Oct	2.3	2.2	2.9	2.5	2.9	1.9	5.6	5.6	7.7	5.9	9.8	8.7		
Nov	2.5	2.2	2.6	2.5	3.6	2.8	6.9	6.3	7.4	5.8	8.6	8.4		
Dec	2.4	2.4	2.8	2.4	4.2	3.2	6.3	5.8	7.6	6.2	12.0	13.1		

**SOURCE: Honolulu Board of Realtors® Research Department, compiled from MLS data.**

# Months of Inventory Remaining by Price Ranges and Areas

## Comparisons Between August 2009 and 2008

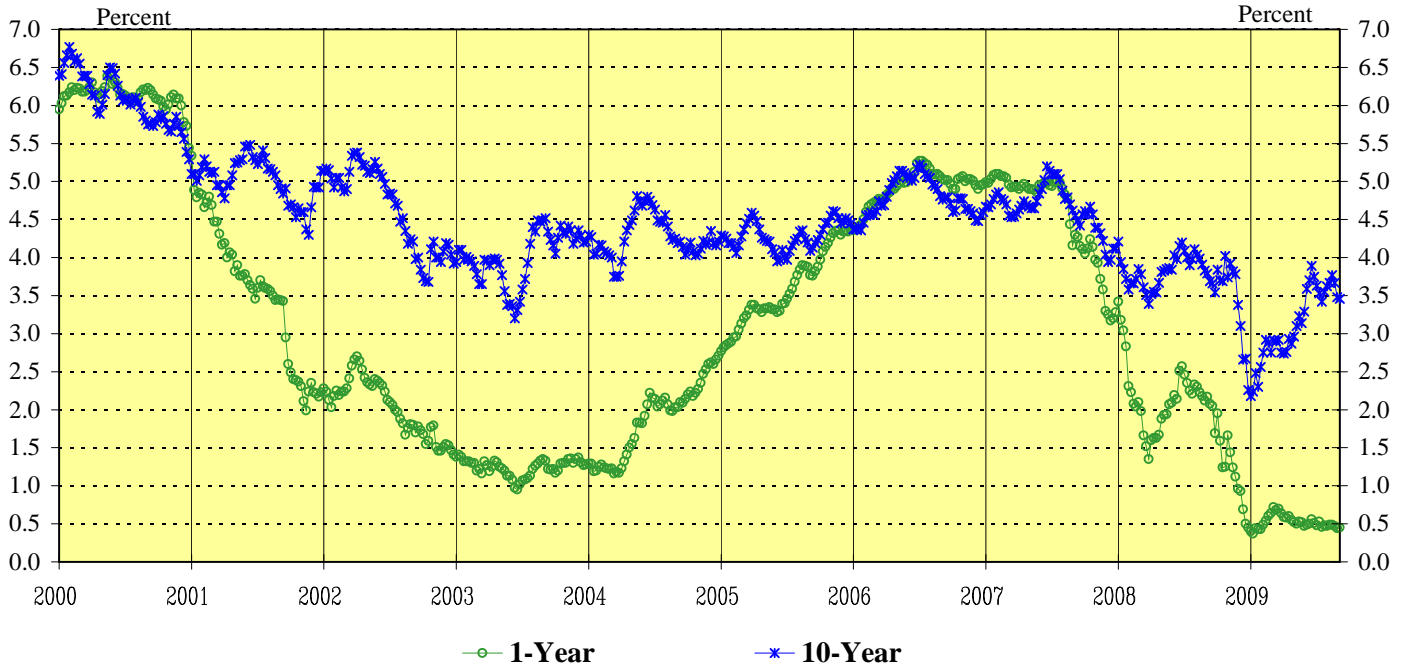
<b>SINGLE-FAMILY HOMES</b>							
	<u>Current Month</u>			<u>Same Month Last Year</u>			Year-to-Year Change in Number of Months
	Sales	Inventory	Number of Months	Sales	Inventory	Number of Months	
<b>Price Ranges (000)</b>							
Less Than \$200	3	19	<b>6.3</b>	3	8	2.7	<b>3.6</b>
\$200 - 299	13	48	<b>3.7</b>	3	31	10.3	<b>-6.6</b>
\$300 - 399	24	107	<b>4.5</b>	19	134	7.1	<b>-2.6</b>
\$400 - 499	51	217	<b>4.3</b>	34	241	7.1	<b>-2.8</b>
\$500 - 699	85	355	<b>4.2</b>	95	621	6.5	<b>-2.3</b>
\$700 - 999	63	363	<b>5.8</b>	59	481	8.2	<b>-2.4</b>
More Than \$1,000	26	515	<b>19.8</b>	38	603	15.9	<b>3.9</b>
<b>Areas</b>							
Metro Oahu	22	201	<b>9.1</b>	29	199	6.9	<b>2.2</b>
East Oahu	47	356	<b>7.6</b>	47	401	8.5	<b>-0.9</b>
Windward Oahu	47	322	<b>6.9</b>	51	409	8.0	<b>-1.1</b>
North Shore	6	123	<b>20.5</b>	10	130	13.0	<b>7.5</b>
Leeward Oahu	143	622	<b>4.3</b>	114	980	8.6	<b>-4.3</b>
<b>All Single Family</b>	<b>265</b>	<b>1,624</b>	<b>6.1</b>	<b>251</b>	<b>2,119</b>	<b>8.4</b>	<b>-2.3</b>

<b>CONDOMINIUMS</b>							
	<u>Current Month</u>			<u>Same Month Last Year</u>			Year-to-Year Change in Number of Months
	Sales	Inventory	Number of Months	Sales	Inventory	Number of Months	
<b>Price Ranges (000)</b>							
Less Than \$100	8	68	<b>8.5</b>	6	41	6.8	<b>1.7</b>
\$100 - 149	11	149	<b>13.5</b>	6	103	17.2	<b>-3.7</b>
\$150 - 199	27	268	<b>9.9</b>	38	274	7.2	<b>2.7</b>
\$200 - 249	51	249	<b>4.9</b>	45	308	6.8	<b>-1.9</b>
\$250 - 299	52	270	<b>5.2</b>	52	369	7.1	<b>-1.9</b>
\$300 - 499	137	628	<b>4.6</b>	150	917	6.1	<b>-1.5</b>
More Than \$500	41	508	<b>12.4</b>	68	731	10.8	<b>1.6</b>
<b>Areas</b>							
Metro Oahu	179	1,304	<b>7.3</b>	197	1,578	8.0	<b>-0.7</b>
East Oahu	25	165	<b>6.6</b>	31	236	7.6	<b>-1.0</b>
Windward Oahu	23	104	<b>4.5</b>	17	150	8.8	<b>-4.3</b>
North Shore	2	45	<b>22.5</b>	3	59	19.7	<b>2.8</b>
Leeward Oahu	98	522	<b>5.3</b>	117	720	6.2	<b>-0.9</b>
<b>All Condominiums</b>	<b>327</b>	<b>2,140</b>	<b>6.5</b>	<b>365</b>	<b>2,743</b>	<b>7.5</b>	<b>-1.0</b>

NOTE: This table is constructed using the mid-month inventory and the **prior month's sales**.

SOURCE: Honolulu Board of Realtors® Research Department, compiled from MLS data.

# WEEKLY AVERAGE YIELDS OF SELECTED TREASURY SECURITIES



The Average Yields for US Treasury Securities have an important impact on interest rates in the housing market. The relationships are:

LOAN RATE FOR:	BASED ON:
Adjustable Rate Mortgages	1-Year TB*
Fixed Rate 30-Year Loans	10-Yr TB*

\*TB = US Treasury Bill or Bond

First Half 2008			Second Half 2008			First Half 2009			Second Half 2009		
Wk	1YR	10YR	Wk	1YR	10YR	Wk	1YR	10YR	Wk	1YR	10YR
1	3.42	4.21	27	2.46	4.09	1	0.40	2.18	27	0.48	3.63
2	3.18	3.94	28	2.35	4.00	2	0.37	2.24	28	0.53	3.53
3	3.04	3.85	29	2.25	3.90	3	0.44	2.48	29	0.46	3.42
4	2.83	3.72	30	2.21	3.98	4	0.43	2.30	30	0.48	3.55
5	2.31	3.58	31	2.33	4.11	5	0.43	2.56	31	0.47	3.62
6	2.23	3.67	32	2.30	4.04	6	0.49	2.75	32	0.49	3.67
7	2.08	3.66	33	2.23	3.99	7	0.54	2.92	33	0.49	3.77
8	2.04	3.72	34	2.18	3.91	8	0.60	2.88	34	0.47	3.67
9	2.10	3.85	35	2.12	3.83	9	0.64	2.75	35	0.44	3.48
10	1.98	3.78	36	2.17	3.79	10	0.72	2.91	36	0.45	3.46
11	1.66	3.61	37	2.08	3.69	11	0.68	2.90	37		
12	1.52	3.51	38	2.05	3.66	12	0.70	2.92	38		
13	1.35	3.39	39	1.69	3.54	13	0.64	2.75	39		
14	1.60	3.52	40	1.95	3.84	14	0.59	2.74	40		
15	1.63	3.55	41	1.59	3.70	15	0.58	2.76	41		
16	1.63	3.54	42	1.24	3.69	16	0.60	2.93	42		
17	1.67	3.67	43	1.25	4.02	17	0.55	2.87	43		
18	1.88	3.81	44	1.66	3.74	18	0.52	2.96	44		
19	1.93	3.83	45	1.44	3.92	19	0.50	3.10	45		
20	1.94	3.85	46	1.24	3.82	20	0.53	3.23	46		
21	2.07	3.86	47	1.12	3.78	21	0.52	3.14	47		
22	2.09	3.84	48	0.96	3.38	22	0.47	3.29	48		
23	2.19	4.03	49	0.93	3.10	23	0.49	3.59	49		
24	2.14	3.98	50	0.69	2.66	24	0.50	3.70	50		
25	2.51	4.15	51	0.50	2.67	25	0.56	3.89	51		
26	2.57	4.20	52	0.45	2.26	26	0.51	3.75	52		

1990 - 2007					
Yr:Qt	1YR	10YR	Yr:Qt	1YR	10YR
90:H1	8.20	8.54	99:H1	4.76	5.19
90:H2	7.58	8.56	99:H2	5.36	5.98
91:H1	6.34	8.07	00:H1	6.20	6.35
91:H2	5.40	7.66	00:H2	6.05	5.80
92:H1	4.29	7.33	01:H1	4.26	5.15
92:H2	3.50	6.69	01:H2	2.85	4.89
93:H1	3.40	6.16	02:H1	2.34	5.11
93:H2	3.47	5.61	02:H2	1.71	4.18
94:H1	4.47	6.54	03:H1	1.23	3.77
94:H2	6.04	7.56	03:H2	1.26	4.25
95:H1	6.40	7.10	04:H1	1.48	4.30
95:H2	5.57	6.13	04:H2	2.25	4.25
96:H1	5.37	6.26	05:H1	3.18	4.24
96:H2	5.64	6.59	05:H2	4.01	4.34
97:H1	5.75	6.63	06:H1	4.79	4.79
97:H2	5.52	6.11	06:H2	5.05	4.79
98:H1	5.37	5.61	07:H1	4.97	4.75
98:H2	4.76	4.98	07:H2	4.15	4.54

SOURCE: Honolulu Board of REALTORS® Research Department, compiled from U.S. FEDERAL RESERVE H15 statistical releases.